



**GLORY**

# PRODUCT CATALOGUE

**Mining machinery-Excavator**



**GLORY**

**Qingdao Ever Glory Machinery Co., Ltd**

[www.everglorymachinery.com](http://www.everglorymachinery.com)  
Email: [market@everglorymachinery.com](mailto:market@everglorymachinery.com)

TEL : +86-18153282521



# GLORY

## About GLORY

---



GLORY Machinery Group, located in Qingdao, specializes in the design, develop and production of construction and agricultural machinery. The products covers mining machinery, road machinery, agricultural machinery and so on.

With nearly 20 years of industry experience, GLORY machinery has been exported to South America, Europe, the Middle East, Southeast Asia, Africa and other more than 30 countries and regions.

GLORY has modern production workshops, advanced production lines, multi-functional laser cutting equipment, CNC bending machine, welding machine and other intelligent production equipments. GLORY has researched and manufactured more than 100 models of machinery, which also independently researches the axle by ourselves. GLORY could supply a variety of construction and agricultural implements to achieve one stop solutions, which could meet many conditions and improve the work efficiency.

In order to provide customers with immersive experience services, GLORY has branches in Singapore and Philippines to ensure timely and effective supports for our customers.

GLORY is committed to building the long-term and stable cooperation with customers and achieving the common development.





# GLORY



## ATTACHMENTS

### Various attachments can be replaced



Can be adapted to different environmental needs, easy to cope with a variety of working conditions



bucket



Plain bucket



Sand bucket



Rake



Semi automatic quick change



Grapple



Hydraulic Thumb bucket



Ripper



Auger



Break hammer



Root topper



Steel grabbing machine



Hedge trimmer



Grass trimmer



Mechanical thumb clamp





# GLORY

## Excavator **GX08**

Weight  
**800KG**

Rated power (KW)  
**7kw**

Bucket capacity  
**0.025m<sup>3</sup>**

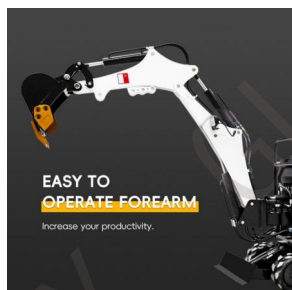


## GX08 technical specifications

### GX08

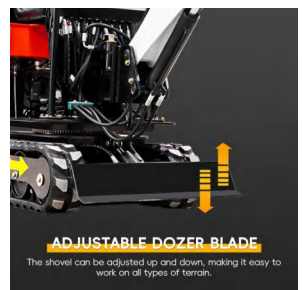
GX08	
Model	GX08
Weight	800kg
Overall dimension( L x W x H)	2430*720*1300 mm
Engine	KOOP 192F
Rated power	7KW
Digging bucket capacity	0.025m <sup>3</sup>
Wheelbase	570mm
Track length	1140mm
Track width	150mm
Min.Ground clearance	80mm
Max. Digging depth	1200mm
Max. Vertical digging depth	1050mm
Max. Digging height	2350mm
Max. Dumping height	1600mm
Max. Digging radius on ground	2450mm
Min. Rotation radius	1100mm

#### KOOP 192 ENGINE 7KW~7.5KW



#### COMFORTABLE SEATS

Ergonomic and comfortable to work with.





## Excavator **GX10**

Weight

**1000KG**

Rated power (KW)

**10.2kw**

Bucket capacity

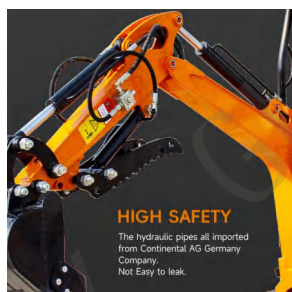
**0.025m<sup>3</sup>**



## GX10 technical specifications

### GX10

	GX10
Model	GX10
Weight	1000Kg
Overall dimension( L x W x H)	2775*930*2219 mm
Engine	Kubota D722
Rated power	10.2KW
Digging bucket capacity	0.025m <sup>3</sup> /120kg
Wheelbase	910mm
Track length	1230mm
Track width	180mm
Min.Ground clearance	132mm
Max. Digging depth	1750mm
Max. Vertical digging depth	1375mm
Max. Digging height	2610mm
Max. Dumping height	1850mm
Max. Digging radius on ground	2850mm
Min. Rotation radius	1330mm







# GLORY

## Excavator **GX12**

Weight  
**1200KG**

Rated power (KW)  
**7kw**

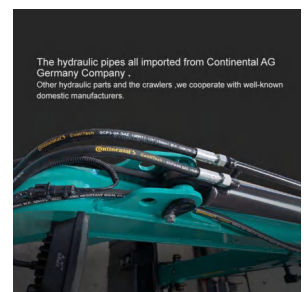
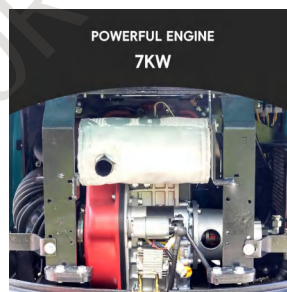
Bucket capacity  
**0.02m<sup>3</sup>**



## GX12 technical specifications

### GX12

GX12	
Model	GX12
Weight	1200Kg
Overall dimension( L x W x H)	2775*930*2219 mm
Engine	KOOP
Rated power	7KW
Digging bucket capacity	0.02m <sup>3</sup>
Wheelbase	910mm
Track length	1230mm
Track width	180mm
Min.Ground clearance	132mm
Max. Digging depth	1750mm
Max. Vertical digging depth	1375mm
Max. Digging height	2610mm
Max. Dumping height	1850mm
Max. Digging radius on ground	2850 mm
Min. Rotation radius	1330 mm







# GLORY

## Excavator **GX13**

Weight  
**1300KG**

Rated power (KW)  
**10.2kw**

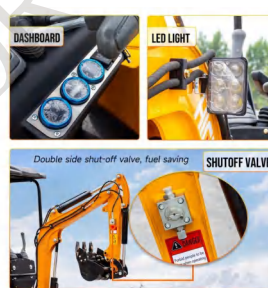
Bucket capacity  
**0.02m<sup>3</sup>**



## GX13 technical specifications

### GX13

Model	GX13
Weight	1300kg
Overall dimension( L x W x H)	2325*1100*2270 mm
Engine	KOOP 192F
Rated power	10.2KW
Digging bucket capacity	0.02m <sup>3</sup>
Wheelbase	920mm
Track length	1545mm
Track width	180mm
Min.Ground clearance	135mm
Max. Digging depth	1710mm
Max. Vertical digging depth	1500mm
Max. Digging height	2700mm
Max. Dumping height	1840mm
Max. Digging radius on ground	2910mm
Min. Rotation radius	1530mm







# GLORY

## Excavator **GX15**

Weight  
**1500KG**

Rated power (KW)  
**10.2kw**

Bucket capacity  
**0.02m<sup>3</sup>**



## GX15 technical specifications

### GX15

GX15	
Model	GX15
Weight	1500kg
Overall dimension( L x W x H)	2300*930*2270 mm
Engine	KOOP
Rated power	10.2KW
Digging bucket capacity	0.02m <sup>3</sup>
Wheelbase	800mm
Track length	1220mm
Track width	180mm
Min. Ground clearance	150mm
Max. Digging depth	1850mm
Max. Vertical digging depth	1750mm
Max. Digging height	2450mm
Max. Dumping height	1850mm
Max. Digging radius on ground	2920mm
Min. Rotation radius	1550mm

Tallless



Rubber track  
Gear transmission, strong grip, Optional telescopic crawler



Dashboard



All with oil drain

All with oil drain pipe for travel motor and swing motor.



Boom swing

(Optional function)



The customer's movements are coordinated and smooth in the driving work







# GLORY

## Excavator **GX16**

Weight  
**1350KG**

Rated power (KW)  
**10.2kw**

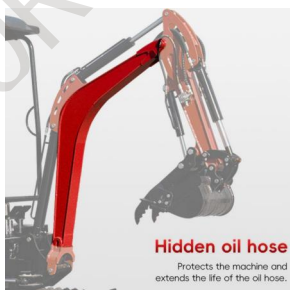
Bucket capacity  
**0.025m<sup>3</sup>**



## GX16 technical specifications

### GX16

GX16	
Model	GX16
Weight	1350kg
Overall dimension( L x W x H)	2450*940*2150mm
Engine	Kubota D722
Rated power	10.2KW
Digging bucket capacity	0.025m <sup>3</sup>
Wheelbase	1300mm
Track length	1545mm
Track width	200mm
Min.Ground clearance	380mm
Max. Digging depth	1800mm
Max. Vertical digging depth	2230mm
Max. Digging height	2100mm
Max. Dumping height	2640mm
Max. Digging radius on ground	2350mm
Min. Rotation radius	1190mm







# GLORY

## Excavator GX18

Weight  
1800KG

Rated power (KW)  
14kw

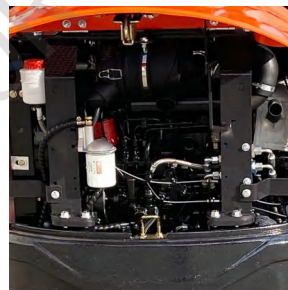
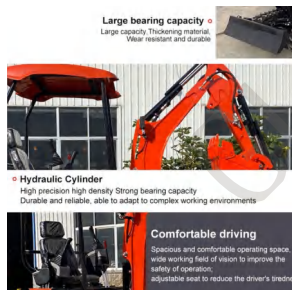
Bucket capacity  
0.04m<sup>3</sup>



## GX18 technical specifications

### GX18

	GX18
Model	GX18
Weight	1800kg
Overall dimension( L x W x H)	2250*1135*2200mm
Engine	Kubota D722
Rated power	10.2KW
Digging bucket capacity	0.04m <sup>3</sup>
Wheelbase	920mm
Track length	1500mm
Track width	230mm
Min. Ground clearance	380mm
Max. Digging depth	1900mm
Max. Vertical digging depth	1800mm
Max. Digging height	2900mm
Max. Dumping height	2000mm
Max. Digging radius on ground	2500mm
Min. Rotation radius	1711mm







# GLORY

## Excavator **GX20**

Weight  
**2000KG**

Rated power (KW)  
**11.8kw**

Bucket capacity  
**0.04m<sup>3</sup>**



## GX20 technical specifications

### GX20

	GX20
Model	GX20
Weight	2000kg
Overall dimension( L x W x H)	3337*1100*2325mm
Engine	Kubota D902
Rated power	11.8KW
Digging bucket capacity	0.04m <sup>3</sup>
Wheelbase	920mm
Track length	1545mm
Track width	200mm
Min.Ground clearance	119mm
Max. Digging depth	2060mm
Max. Vertical digging depth	mm
Max. Digging height	2580mm
Max. Dumping height	1637mm
Max. Digging radius on ground	3130mm
Min. Rotation radius	1575mm

#### CAB VERSION AND CANOPY VERSION

two versions: cab version and canopy version



TWO CHOICES

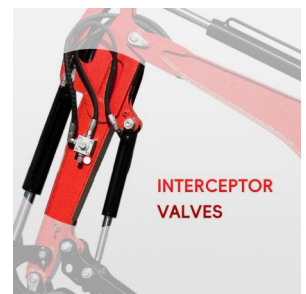
The roof version adopts high-strength seamless steel tube design, safe and reliable, with smooth lines.

The cab adopts one-piece steel structure design, safe and reliable structure, equipped with heating and cooling air-conditioning. In order to further improve the comfort, the space is increased to the maximum under the same level of cab space standards.



#### Inverted jib cylinder

Inverted design of the boom cylinder, Greatly increases the digging depth.



INTERCEPTOR VALVES





# GLORY

## Excavator **GX22**

Weight  
**2172KG**

Rated power (KW)  
**14.2kw**

Bucket capacity  
**0.056m<sup>3</sup>**



## GX22 technical specifications

### GX22

GX22	
Model	GX22
Weight	2172kg
Overall dimension( L x W x H)	3850*990*2470mm
Engine	Kubota D1105
Rated power	14.2KW
Digging bucket capacity	0.056m <sup>3</sup>
Wheelbase	1010mm
Track length	1500mm
Track width	230mm
Min.Ground clearance	150mm
Max. Digging depth	2370mm
Max. Vertical digging depth	1725mm
Max. Digging height	3500mm
Max. Dumping height	2560mm
Max. Digging radius on ground	3860mm
Min. Rotation radius	1720mm







# GLORY

## Excavator **GX25**

Weight  
**2500KG**

Rated power (KW)  
**14.2kw**

Bucket capacity  
**0.06m<sup>3</sup>**



## GX25 technical specifications

### GX25

	GX25
Model	GX25
Weight	2500kg
Overall dimension( L x W x H)	3865*1050*2270mm
Engine	Kubota D1105
Rated power	14.2KW
Digging bucket capacity	0.06m <sup>3</sup>
Wheelbase	1230mm
Track length	1858mm
Track width	250mm
Min.Ground clearance	210mm
Max. Digging depth	2045mm
Max. Vertical digging depth	1725mm
Max. Digging height	3365mm
Max. Dumping height	2610mm
Max. Digging radius on ground	3860mm
Min. Rotation radius	1955mm

#### Hydraulic three-way shut-off valve

Standard hydraulic three-way shut-off valve, both oil lines can be switched back and forth with a spooler to control the oil line when the digger is not removed.



#### Driving Functions

Cyclone key power-off function, turn off the vehicle key off the engine, the power safety will automatically power-off function, to avoid battery power consumption leads to the next start when the engine can not start.



#### Fully Hydraulic Pilot

Fully Hydraulic pilot operation includes: pilot handles on both sides, push shows, spinning operation, breaker hammer and side swing function.







# GLORY

Excavator  
**GX30**

Weight  
**3000KG**

Rated power (KW)  
**14.2kw**

Bucket capacity  
**0.1m<sup>3</sup>**



## GX30 technical specifications

### GX30

GX30	
Model	GX30
Weight	3000kg
Overall dimension( L x W x H)	4170*1300*2280mm
Engine	Kubota
Rated power	14.2KW
Digging bucket capacity	0.1m <sup>3</sup>
Wheelbase	1230mm
Track length	2000mm
Track width	230mm
Min.Ground clearance	230mm
Max. Digging depth	2450mm
Max. Vertical digging depth	2160mm
Max. Digging height	3700mm
Max. Dumping height	2290mm
Max. Digging radius on ground	4370mm
Min. Rotation radius	2020mm







# GLORY

## Excavator **GX35**

Weight  
**3600KG**

Rated power (KW)  
**34kw**

Bucket capacity  
**0.26m<sup>3</sup>**

## GX35 technical specifications

### GX35

	GX35
Model	GX35
Weight	3600kg
Overall dimension( L x W x H)	4400*1500*2200mm
Engine	Xinchai 490
Rated power	34KW
Digging bucket capacity	0.26m <sup>3</sup>
Wheelbase	2000mm
Track length	2175mm
Track width	300mm
Min.Ground clearance	319mm
Max. Digging depth	2545mm
Max. Vertical digging depth	2140mm
Max. Digging height	4450mm
Max. Dumping height	3050mm
Max. Digging radius on ground	4730mm
Min. Rotation radius	2634mm

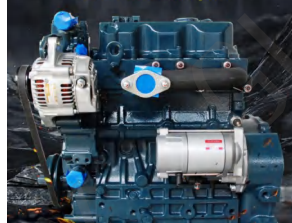
#### CLOSED CABIN

The cab adopts an integrated steel structure design, which is safe and reliable. It is equipped with air conditioning.



In order to further improve the comfort, the space is increased to the maximum under the space standard of the cab of the same model.

#### Kubota 1703 engine 18.5KW/2200rpm



#### More details





## Excavator **GX40**

Weight  
**3810KG**

Rated power (KW)  
**18.5kw**

Bucket capacity  
**0.12m<sup>3</sup>**

## GX40 technical specifications

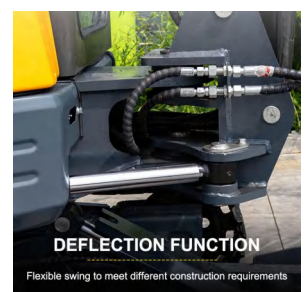
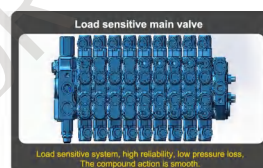
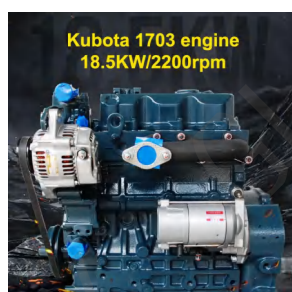
### GX40

Model	GX40
Weight	3810kg
Overall dimension( L x W x H)	4915*1720*2525mm
Engine	Kubota D1703
Rated power	18.5KW
Digging bucket capacity	0.12m <sup>3</sup>
Wheelbase	1670mm
Track length	2154mm
Track width	300mm
Min.Ground clearance	295mm
Max. Digging depth	3208mm
Max. Vertical digging depth	2957mm
Max. Digging height	4800mm
Max. Dumping height	3406mm
Max. Digging radius on ground	5359mm
Min. Rotation radius	2530mm

Colors can be customized



If you need more colors, please leave a message







**GLORY**



**Qingdao Ever Glory Machinery Co., Ltd**

Address: Huangdao District, Qingdao City, Shandong Province

TEL: +86-18153282521

Email: [market@everglormachinery.com](mailto:market@everglormachinery.com)

Website: [www.everglormachinery.com](http://www.everglormachinery.com)